

MEDITECH INSTALLATION INSTRUCTIONS

1. Open [Http://www.detar.com/meditech](http://www.detar.com/meditech)
2. Left click the "[Click here to download the Meditech update](#)" link.
3. Left click the Open button.
4. Double click the "Y [| \ • caā } HZ FaG Ú" icon. Click the "Run" button.

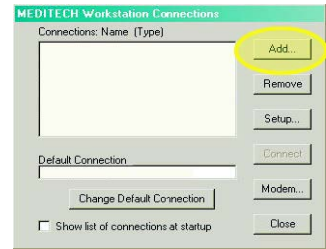
The program auto installs to your PC

1. Double Click the Meditech desktop icon created by the installation.



MAGIC Workstation 4.Ink

2. A workstation connection box will appear. Click **Add** to add a new connection.



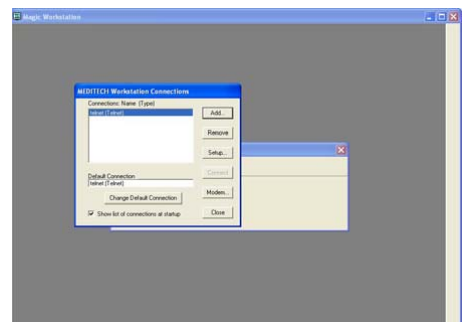
3. Name the connection "Telnet" and select the "Telnet" button. Then click the "OK" button.



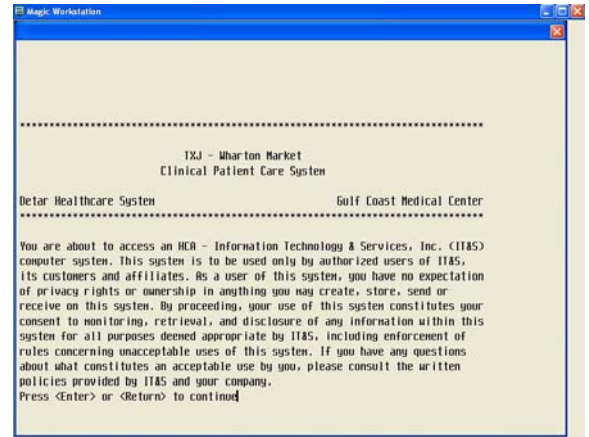
4. Type 159.139.66.10 into the Host Name/ IP Address. Ensure the "Telnet Port" is set to 23. Then click the "OK".



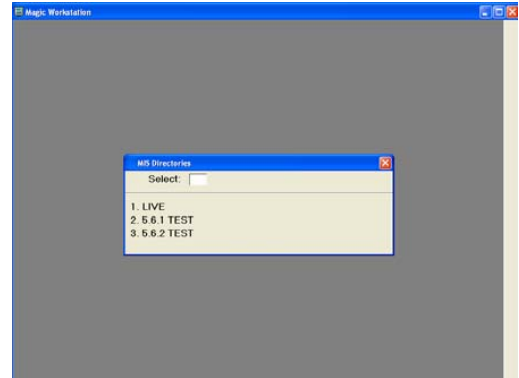
5. The Workstation Connections screen will



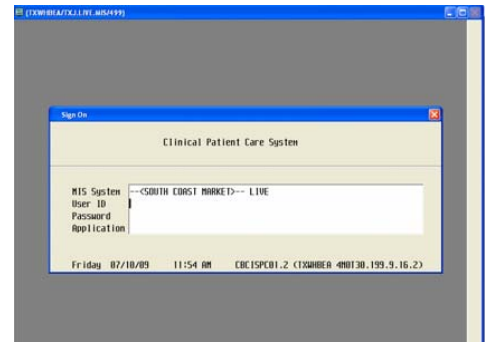
6. The Welcome screen appears - Press the enter key



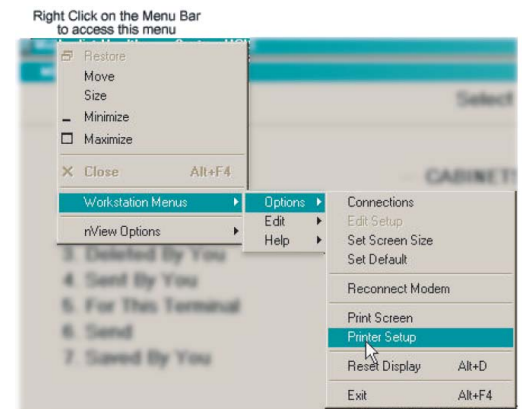
7. Type 1 and press the "Enter" key for live applications.



8. Type your Meditech User ID then press "Enter". Type your Meditech Password then press "Enter"**. First time users Meditech password = changeme**



9. Using the right mouse button click on the top menu bar to access the "Workstation Menus". Navigate to "Printer Setup".



10. Type "PPII" into the Printer Driver box then press the "Enter" key.

Your configuration is now complete!

